

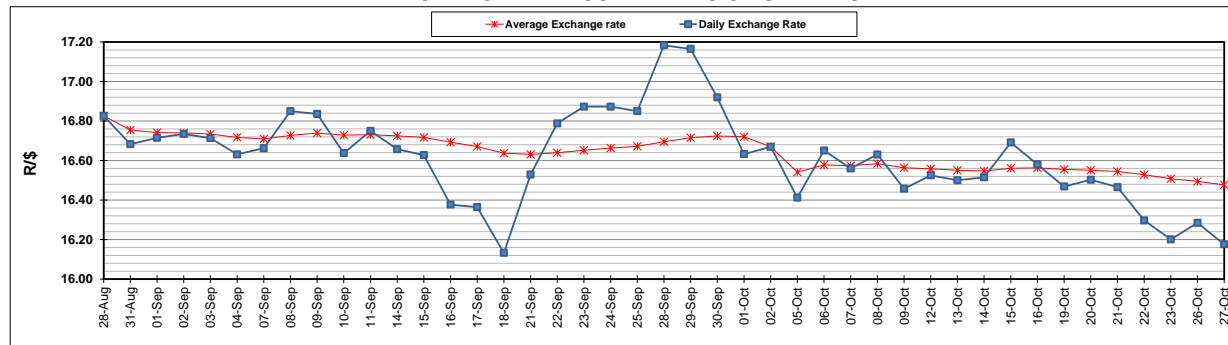
	PETROL 95 ULP	PETROL 93 ULP & LRP	DIESEL 0.05%	DIESEL 0.005%	ILL. PAR.
GAUTENG PUMP PRICE (SA c/l) AS FROM 07/10/2020	1,486.000	1,466.000	-	-	-
WHOLESALE PRICE (SA c/l) AS FROM 07/10/2020	-	-	1,237.560	1,238.960	640.828
SINGLE NATIONAL MAXIMUM RETAIL PRICE	-	-	-	-	798.000
BASIC FUEL PRICE - 27/10/2020 (SA c/l)	486.333	479.535	469.764	473.285	449.049
PRESS RELEASE CONTRIBUTION TO BFP 07/10/2020 - 27/10/2020 (SA c/l)	533.470	523.470	486.630	488.030	436.128
UNIT OVER/(UNDER) RECOVERY - 27/10/2020 (SA c/l)	47.137	43.935	16.866	14.745	(12.921)
AVERAGE BASIC FUEL PRICE 02/10/2020 - 27/10/2020	516.025	508.014	492.475	495.022	465.593
AVERAGE UNIT OVER/(UNDER) RECOVERY 02/10/2020 - 27/10/2020	22.779	19.289	9.155	8.508	(16.798)

ANALYSIS MOVEMENT OF AVERAGE OVER/(UNDER) RECOVERY

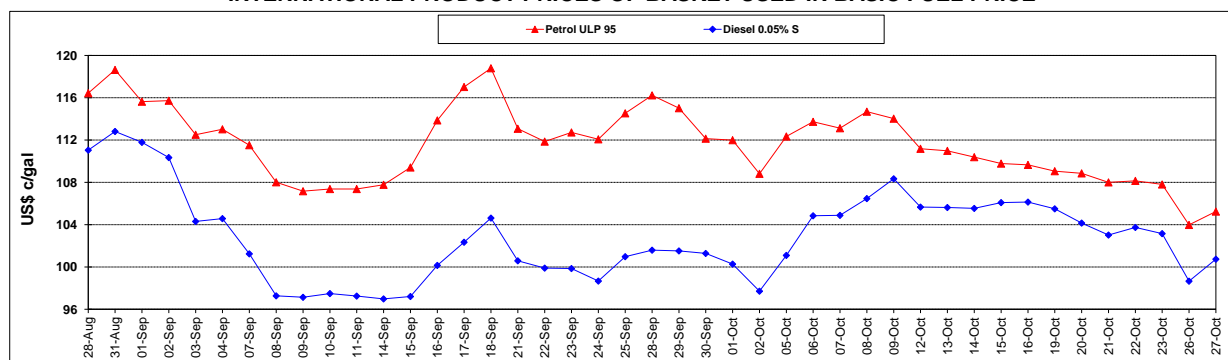
	PETROL 95	PETROL 93	DIESEL 0.05%	DIESEL 0.005%	ILL. PAR.
- MOVEMENT IN INTERNATIONAL PRODUCT PRICES	15.158	11.788	1.883	1.199	(23.673)
- MOVEMENT IN EXCHANGE RATE	7.620	7.501	7.272	7.309	6.875
AVERAGE UNIT OVER/(UNDER) RECOVERY 02/10/2020 - 27/10/2020	22.779	19.289	9.155	8.508	(16.798)

R/\$ EXCHANGE RATE - (R/\$16.1760 - 27/10/2020)

EXCHANGE RATE USED IN BASIC FUEL PRICE



INTERNATIONAL PRODUCT PRICES OF BASKET USED IN BASIC FUEL PRICE



BASIC FUEL PRICE IN SA CENTS PER LITRE

